

Rampion 2 Wind Farm

Category 6: Environmental Statement

Volume 3, Chapter 25: Historic environment – Figures (Part 4 of 5)

Date: August 2023

Revision A

Document Reference: 6.3.25

Pursuant to: APFP Regulations 5 (2) (a), 5 (2) (m)

Ecodoc number: 004884771-01



Document revisions

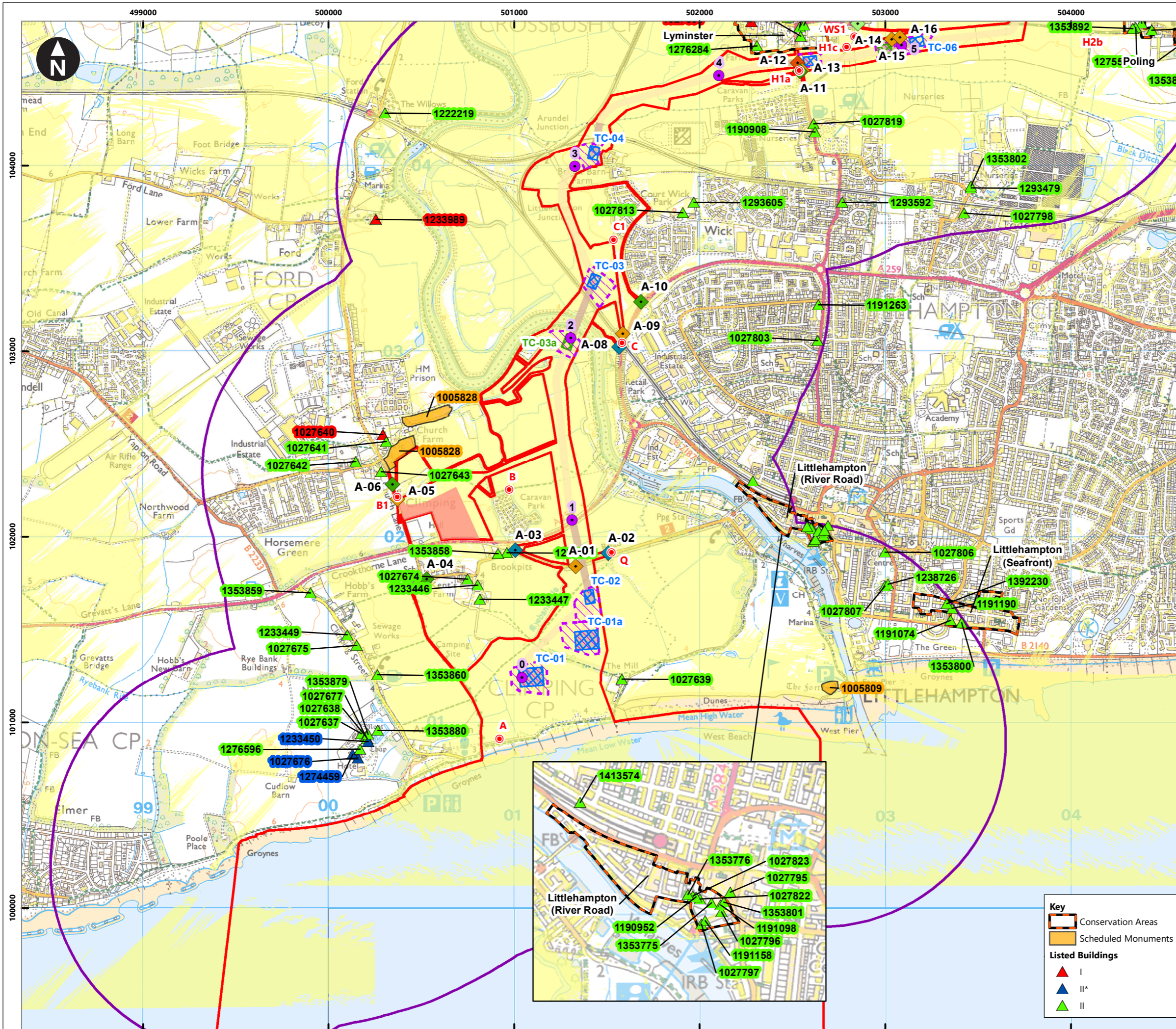
Revision	Date	Status/reason for issue	Author	Checked by	Approved by
A	04/08/2023	Final for DCO Application	WSP	RED	RED

Contents

List of Figures

Figure number	Figure Title	APFP number	Ecodoc number	Revision	Revision Date	Document Part
Figure 25.1	ES Assessment Boundary	5 (2) (a)	004866435-01	A	04/08/2023	Part 1 of 5
Figure 25.2a-h	Designated heritage assets within Study Area	5 (2) (m)	004866436-01	A	04/08/2023	Part 1 of 5
Figure 25.3a-x	HER monument records and UKHO wreck sites	5 (2) (m)	004866437-01	A	04/08/2023	Part 2 of 5
Figure 25.4a-h	Archaeological Notification Areas and features identified by remote sensing (LiDAR and aerial photographs) and historic maps	5 (2) (m)	004866438-01	A	04/08/2023	Part 3 of 5
Figure 25.5a-h	Designated heritage assets assessed for effects through change to setting from onshore development	5 (2) (m)	004866439-01	A	04/08/2023	Part 3 of 5
Figure 25.6a-h	Designated heritage assets with onshore cable corridor and ZTV	5 (2) (a)	004866440-01	A	04/08/2023	Part 4 of 5

Figure number	Figure Title	APFP number	Ecodoc number	Revision	Revision Date	Document Part
Figure 25.7a-c	Designated heritage assets with onshore substation and ZTV	5 (2) (a)	004891443-01	A	04/08/2023	Part 4 of 5
Figure 25.8a-c	Designated heritage assets with Bolney substation extension and ZTV	5 (2) (a)	004891444-01	A	04/08/2023	Part 4 of 5
Figure 25.9a-g	Designated heritage assets assessed for effects through change to setting from offshore development	5 (2) (a)	004891445-01	A	04/08/2023	Part 5 of 5
Figure 25.10a-g	Designated heritage assets assessed for effects through change to setting from offshore development and ZTV	5 (2) (a)	004891446-01	A	04/08/2023	Part 5 of 5
Figure 25.11	Historic environment Zone of Influence	5 (2) (a)	004891447-01	A	04/08/2023	Part 5 of 5



Service Layer Credits: Contains OS data © Crown Copyright and database right 2023
 © Crown copyright and database rights 2023 Ordnance Survey 0100031673

Key

- Proposed DCO Order Limits
- 1km study area
- Trenchless Crossing (TC) compounds
- Trenchless Crossing (TC) compound alternatives
- Trenchless Crossing (TC) limits of deviation
- Temporary construction compound

Proposed onshore cable construction corridor

- Indicative trenchless section
- Indicative open cut section

Onshore cable route KM points

- Onshore cable route

Access from public highway

- Construction
- Construction & operational
- Light construction
- Light construction & operational
- Operational
- Viewpoints
- Area onshore cable corridor construction works is theoretically visible

Key

- Conservation Areas
- Scheduled Monuments

Listed Buildings

- I
- II*
- II

Rampion Extension Development

Rampion 2 WIND FARM

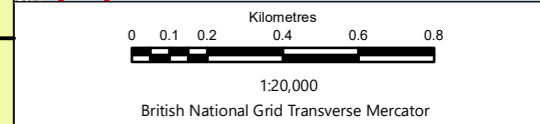
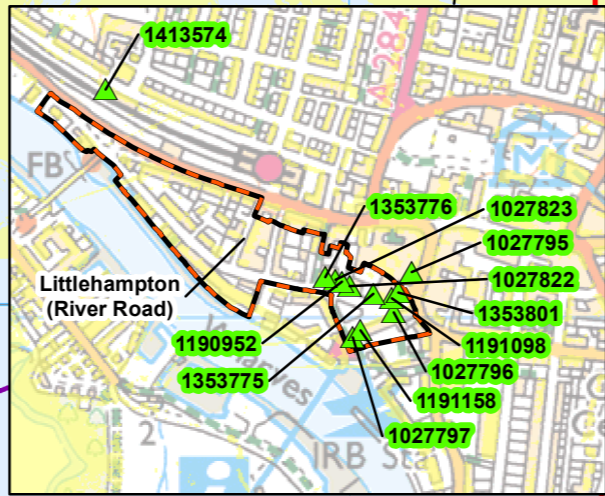
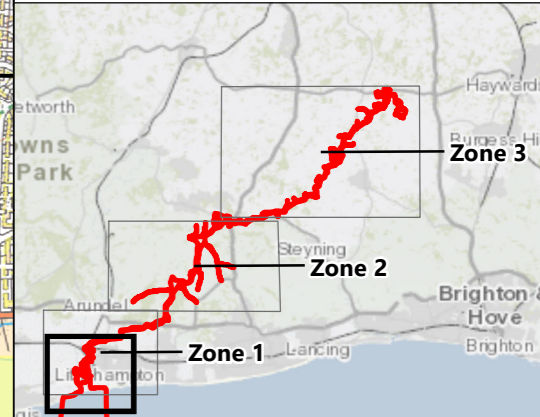
Rampion 2 Offshore Wind Farm

Figure 25.6a Designated heritage assets with onshore cable corridor and ZTV

Environmental Statement

System Identifier: 42285-WSP-ES-ON-FG-OH-2474 Version: 1.0

Company: WSP Drawn By: SHEPS Chk/Prvrd: ASTBD Drawn Date: 28/07/2023 Status: Final



Rampion Extension Development

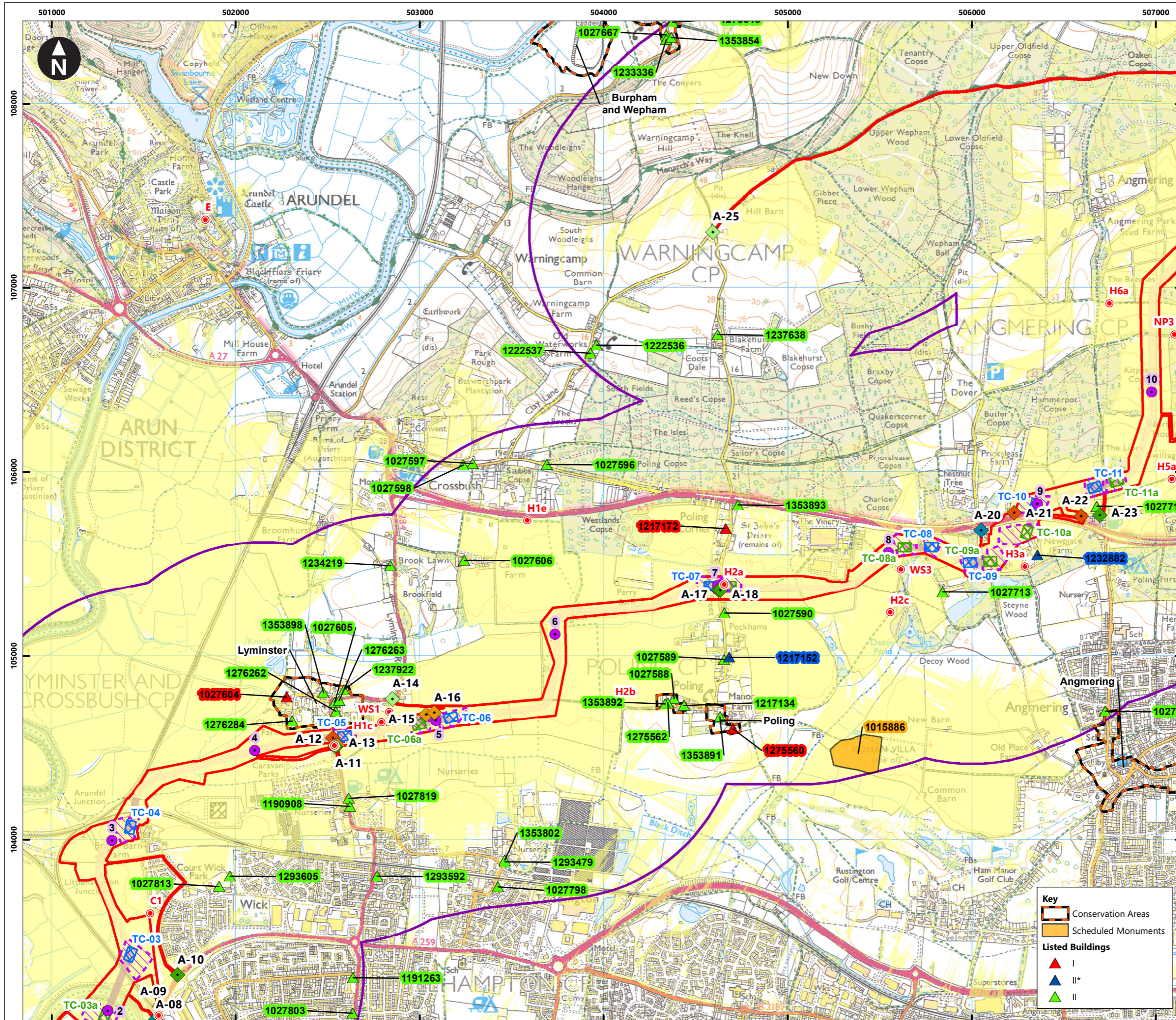
Rampion 2 WIND FARM

Rampion 2 Offshore Wind Farm

Figure 25.6a Designated heritage assets with onshore cable corridor and ZTV

Environmental Statement

System Identifier: 42285-WSP-ES-ON-FG-OH-2474		Version: 1.0
Company: WSP	Drawn By: SHEPS	Chk/Prvrd: ASTBD
Drawn Date: 28/07/2023	Status: Final	



Service Layer Credits: Contains OS data © Crown Copyright and database right 2023
 © Crown copyright and database rights 2023 Ordnance Survey 0100031673

Key

- Proposed DCO Order Limits
- 1km study area
- Trenchless Crossing (TC) compounds
- Trenchless Crossing (TC) compound alternatives
- Trenchless Crossing (TC) limits of deviation
- Proposed onshore cable construction corridor
- Indicative trenchless section
- Indicative open cut section

Onshore cable route KM points

- Onshore cable route

Access from public highway

- Construction
- Construction & operational
- Light construction
- Light construction & operational
- Operational
- Viewpoints
- Area onshore cable corridor construction works is theoretically visible

Key

- Conservation Areas
- Scheduled Monuments

Listed Buildings

- I
- II*
- II

Rampion Extension Development

Rampion 2 WIND FARM

Rampion 2 Offshore Wind Farm

Figure 25.6b Designated heritage assets with onshore cable corridor and ZTV

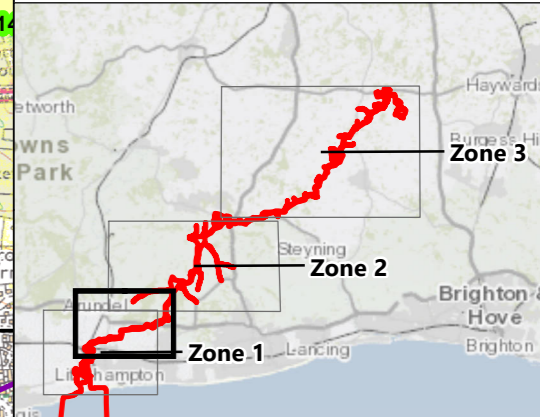
Environmental Statement

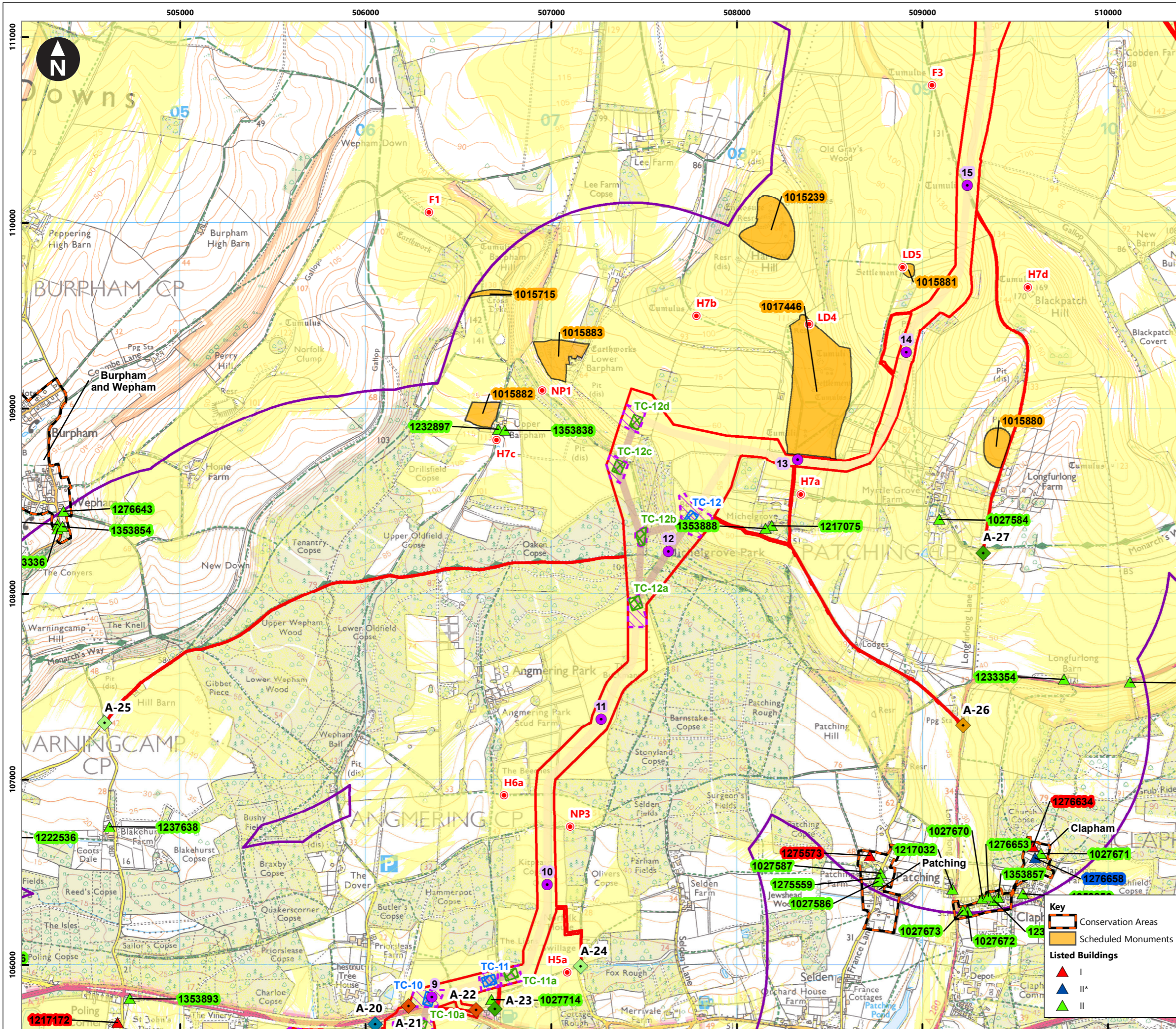
System Identifier: 42285-WSP-ES-ON-FG-OH-2474 Version: 1.0

Company: WSP Drawn By: SHEPS Chk/Prvrd: ASTBD Drawn Date: 28/07/2023 Status: Final

Scale: 1:20,000
 British National Grid Transverse Mercator

0 0.1 0.2 0.4 0.6 0.8 Kilometres





Service Layer Credits: Contains OS data © Crown Copyright and database right 2023
 © Crown copyright and database rights 2023 Ordnance Survey 0100031673

Key

- Proposed DCO Order Limits
- 1km study area
- Trenchless Crossing (TC) compounds
- Trenchless Crossing (TC) compound alternatives
- Trenchless Crossing (TC) limits of deviation
- Proposed onshore cable construction corridor
- Indicative trenchless section
- Indicative open cut section

Onshore cable route KM points

- Onshore cable route

Access from public highway

- Construction
- Construction & operational
- Light construction
- Light construction & operational
- Operational
- Viewpoints
- Area onshore cable corridor construction works is theoretically visible

Key

- Conservation Areas
- Scheduled Monuments

Listed Buildings

- I
- II*
- II

Rampion Extension Development

Rampion 2 Offshore Wind Farm

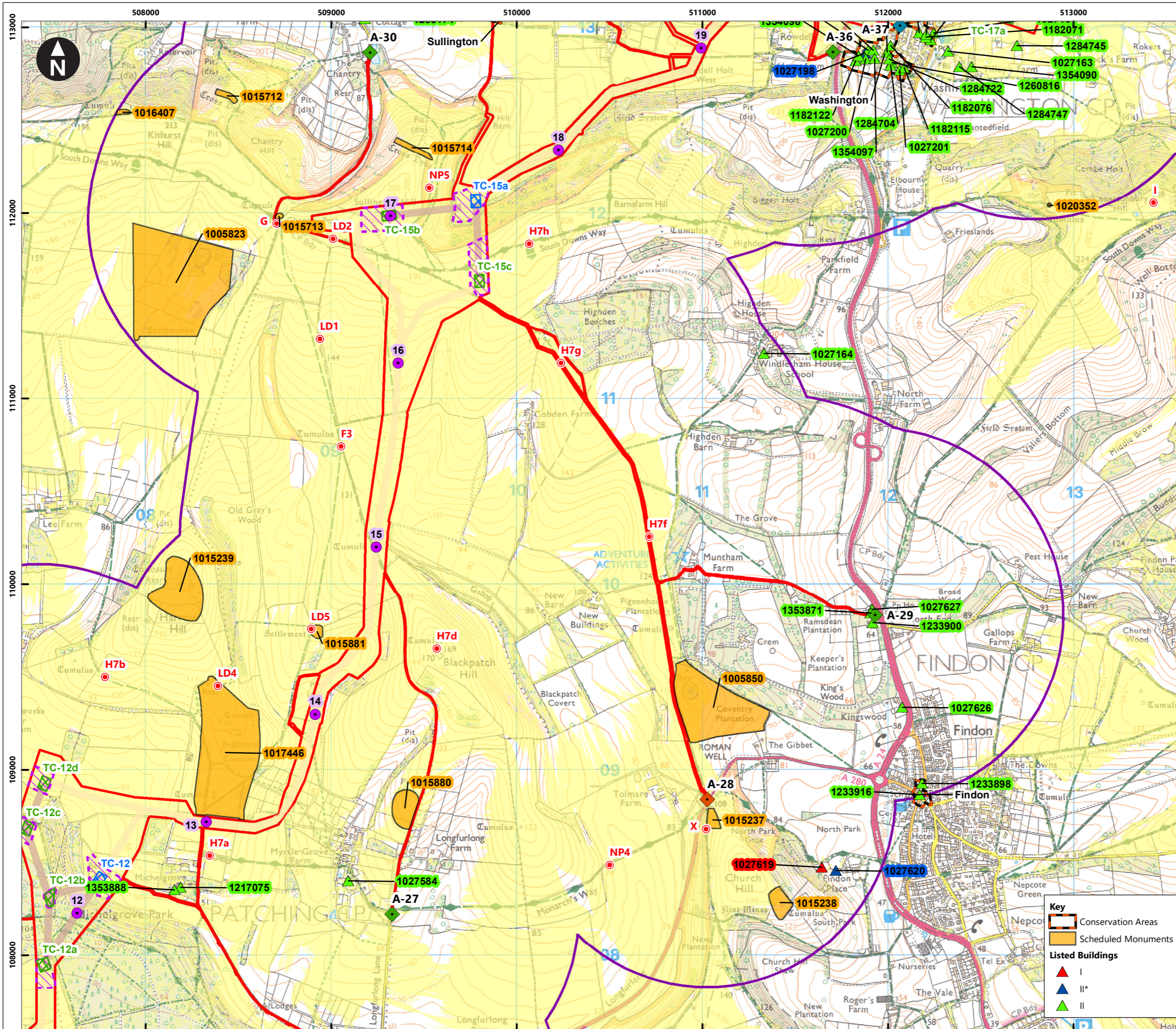
Figure 25.6c Designated heritage assets with onshore cable corridor and ZTV

Environmental Statement

System Identifier: 42285-WSP-ES-ON-FG-OH-2474 Version: 1.0

Company: WSP Drawn By: SHEPS Chk/Prvrd: ASTBD Drawn Date: 28/07/2023 Status: Final

0 0.1 0.2 0.4 0.6 0.8
Kilometres
1:20,000
British National Grid Transverse Mercator



Service Layer Credits: Contains OS data © Crown Copyright and database right 2023
 © Crown copyright and database rights 2023 Ordnance Survey 0100031673

Key

- Proposed DCO Order Limits
- 1km study area
- Trenchless Crossing (TC) compounds
- Trenchless Crossing (TC) compound alternatives
- Trenchless Crossing (TC) limits of deviation

Proposed onshore cable construction corridor

- Indicative trenchless section
- Indicative open cut section

Onshore cable route KM points

- Onshore cable route

Access from public highway

- Construction
- Construction & operational
- Light construction
- Operational
- Viewpoints

Area onshore cable corridor construction works is theoretically visible

Key

- Conservation Areas
- Scheduled Monuments

Listed Buildings

- I
- II*
- II

Rampion Extension Development

Rampion 2 WIND FARM

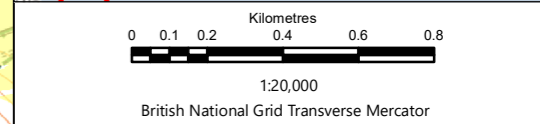
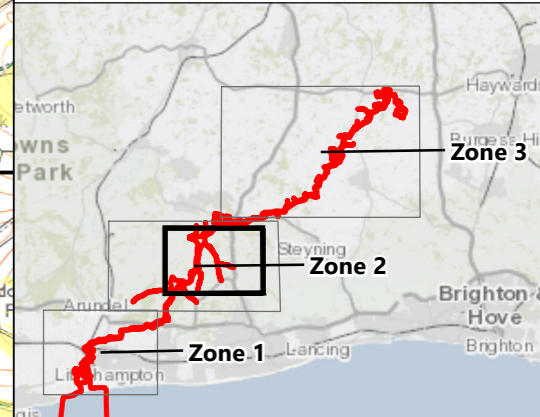
Rampion 2 Offshore Wind Farm

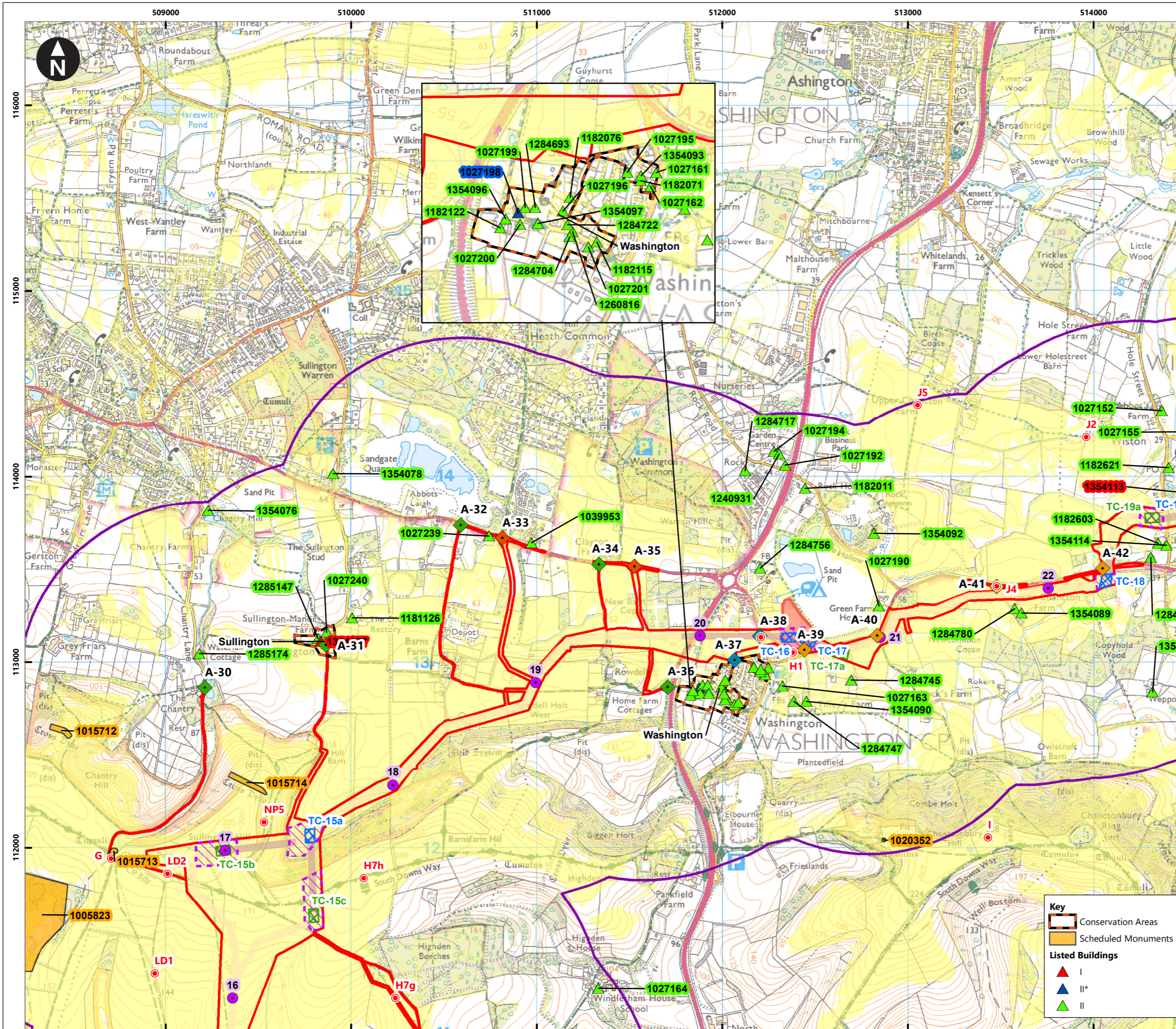
Figure 25.6d Designated heritage assets with onshore cable corridor and ZTV

Environmental Statement

System Identifier: 42285-WSP-ES-ON-FG-OH-2474 Version: 1.0

Company: WSP Drawn By: SHEPS Chk/Prvrd: ASTBD Drawn Date: 28/07/2023 Status: Final





Service Layer Credits: Contains OS data © Crown Copyright and database right 2023
 © Crown copyright and database rights 2023 Ordnance Survey 0100031673

Key

- Proposed DCO Order Limits
- 1km study area
- Trenchless Crossing (TC) compounds
- Trenchless Crossing (TC) compound alternatives
- Trenchless Crossing (TC) limits of deviation
- Temporary construction compound

Proposed onshore cable construction corridor

- Indicative trenchless section
- Indicative open cut section

Onshore cable route KM points

- Onshore cable route

Access from public highway

- Construction
- Construction & operational
- Light construction
- Operational
- Viewpoints

Area onshore cable corridor construction works is theoretically visible

Key

- Conservation Areas
- Scheduled Monuments

Listed Buildings

- I
- II*
- II

Scale: 0 0.1 0.2 0.4 0.6 0.8 Kilometres
 1:20,000
 British National Grid Transverse Mercator

Rampion Extension Development

Rampion 2 WIND FARM

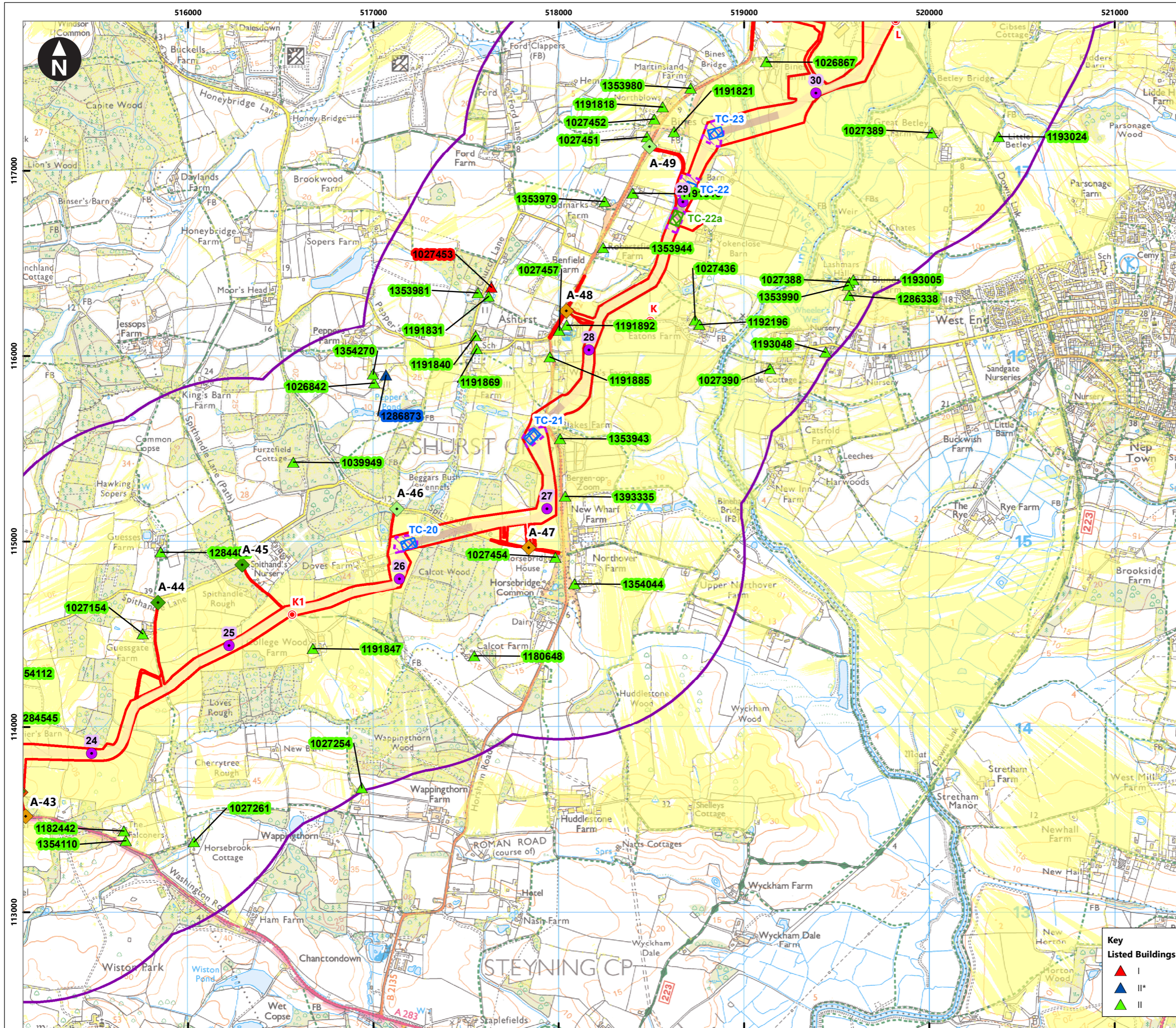
Rampion 2 Offshore Wind Farm

Figure 25.6e Designated heritage assets with onshore cable corridor and ZTV

Environmental Statement

System Identifier: 42285-WSP-ES-ON-FG-OH-2474
 Version: 1.0

Company: WSP
 Drawn By: SHEPS
 Chk/Prvrd: ASTBD
 Drawn Date: 28/07/2023
 Status: Final



Service Layer Credits: Contains OS data © Crown Copyright and database right 2023
 © Crown copyright and database rights 2023 Ordnance Survey 0100031673

Key

- Proposed DCO Order Limits
- 1km study area
- Trenchless Crossing (TC) compounds
- Trenchless Crossing (TC) compound alternatives
- Trenchless Crossing (TC) limits of deviation

Proposed onshore cable construction corridor

- Indicative trenchless section
- Indicative open cut section

Onshore cable route KM points

- Onshore cable route

Access from public highway

- Construction
- Construction & operational
- Light construction & operational
- Operational
- Viewpoints
- Area onshore cable corridor construction works is theoretically visible

Key Listed Buildings

- I
- II*
- II

Inset Map: Shows the project location within a larger regional context, highlighting Zone 1, Zone 2, and Zone 3.

Scale: 0 0.1 0.2 0.4 0.6 0.8 Kilometres
 1:20,000
 British National Grid Transverse Mercator

Rampion Extension Development

Rampion 2 WIND FARM

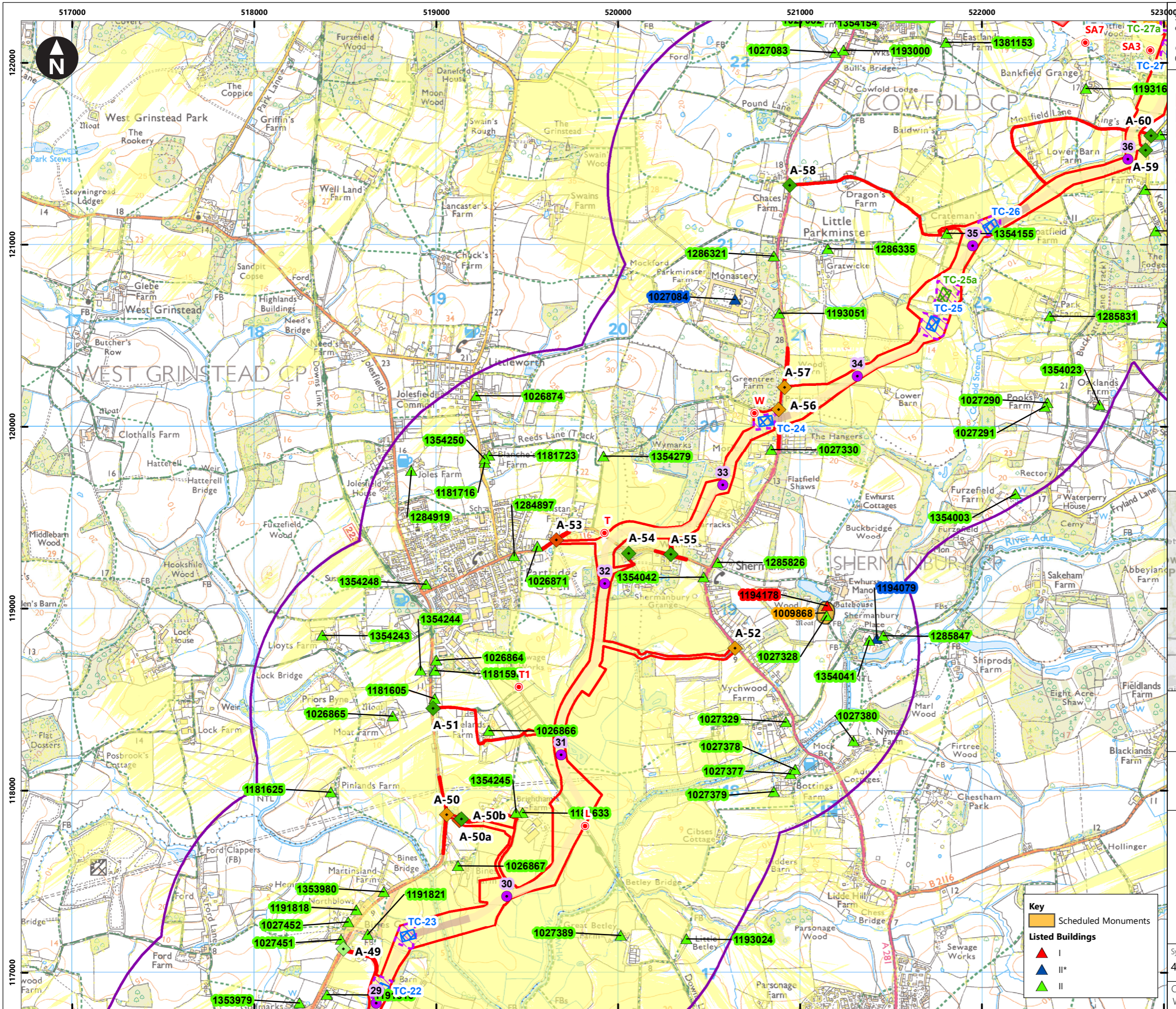
Rampion 2 Offshore Wind Farm

Figure 25.6f Designated heritage assets with onshore cable corridor and ZTV

Environmental Statement

System Identifier: 42285-WSP-ES-ON-FG-OH-2474
 Version: 1.0

Company: WSP
 Drawn By: SHEPS
 Chk/Prvrd: ASTBD
 Drawn Date: 28/07/2023
 Status: Final



Service Layer Credits: Contains OS data © Crown Copyright and database right 2023
 © Crown copyright and database rights 2023 Ordnance Survey 0100031673

Key

- Proposed DCO Order Limits
- 1km study area
- Onshore cable corridor
- Trenchless Crossing (TC) compounds
- Trenchless Crossing (TC) compound alternatives
- Trenchless Crossing (TC) limits of deviation
- Temporary construction compound

Proposed onshore cable construction corridor

- Indicative trenchless section
- Indicative open cut section

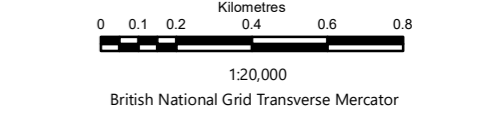
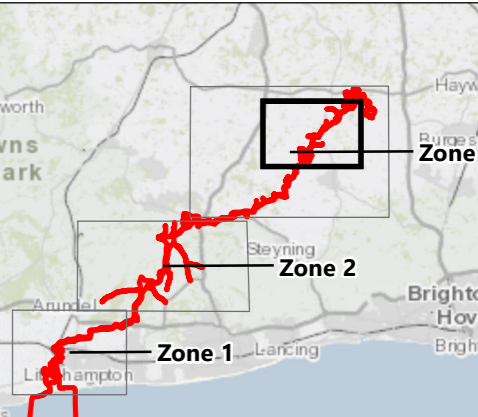
Onshore cable route KM points

- Onshore cable route

Access from public highway

- ◆ Construction
- ◇ Construction & operational
- ◆ Light construction & operational
- ◇ Operational
- Viewpoints

Area onshore cable corridor construction works is theoretically visible



Rampion Extension Development


Rampion 2 Offshore Wind Farm
 Figure 25.6g Designated heritage assets with onshore cable corridor and ZTV

Environmental Statement

System Identifier: 42285-WSP-ES-ON-FG-OH-2474
 Version: 1.0

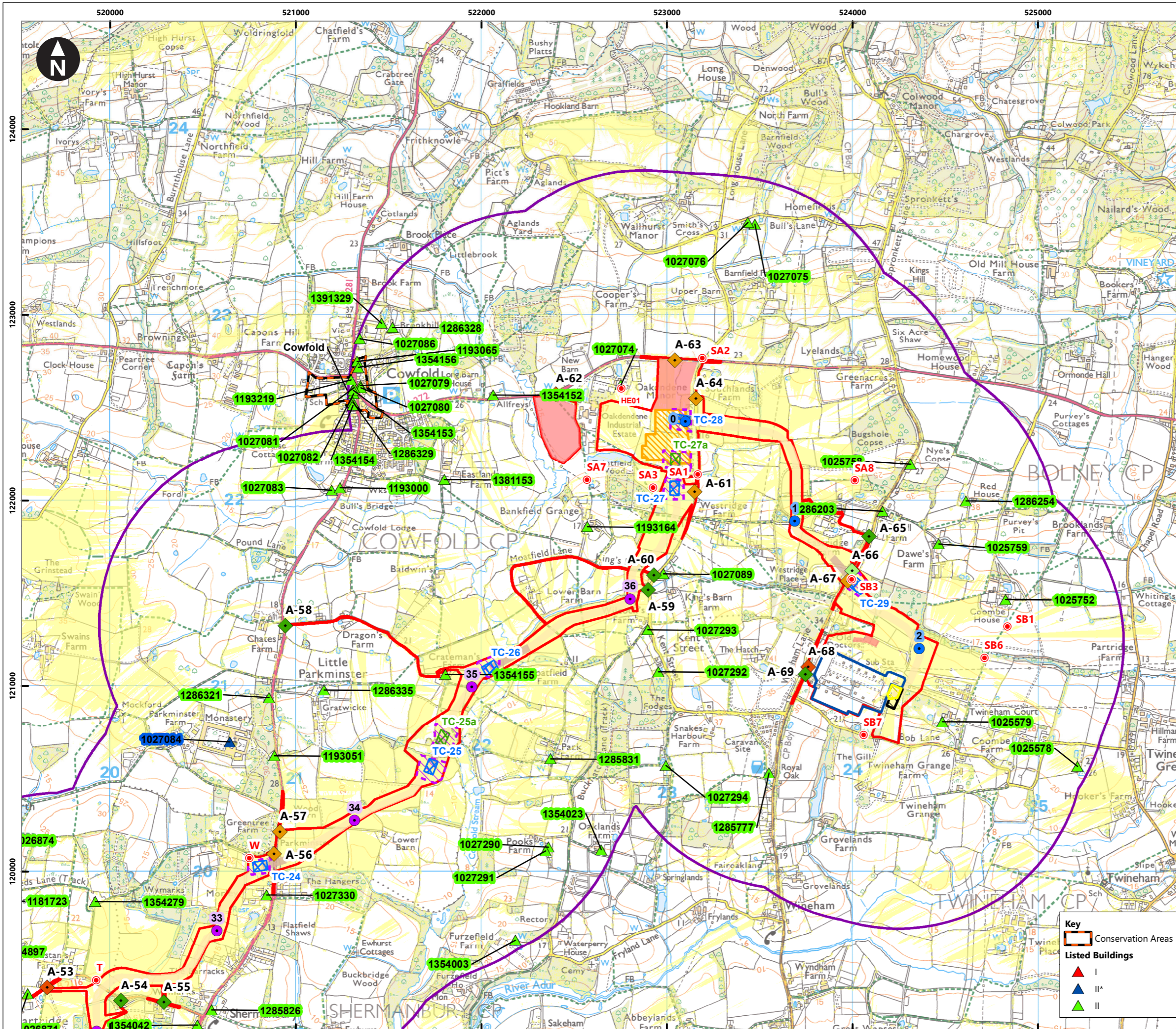
Company: WSP	Drawn By: SHEPS	Chk/Prvrd: ASTBD	Drawn Date: 28/07/2023	Status: Final
--------------	-----------------	------------------	------------------------	---------------

Key

- Scheduled Monuments

Listed Buildings

- ▲ I
- ▲ II*
- ▲ II



Service Layer Credits: Contains OS data © Crown Copyright and database right 2023
 © Crown copyright and database rights 2023 Ordnance Survey 0100031673

Key

- Proposed DCO Order Limits
- 1km study area
- Bolney Substation extension (AIS)
- Bolney Substation extension (GIS)
- Existing National Grid Substation
- Oakendene substation site
- Trenchless Crossing (TC) compounds
- Trenchless Crossing (TC) compound alternatives
- Trenchless Crossing (TC) limits of deviation
- Temporary construction compound

Proposed onshore cable construction corridor

- Indicative trenchless section
- Indicative open cut section

Onshore cable route KM points

- Onshore Substation connection
- Onshore cable route

Access from public highway

- Construction
- Construction & operational
- Light construction & operational
- Operational
- Viewpoints
- Area onshore cable corridor construction works is theoretically visible

Key

- Conservation Areas
- Listed Buildings
- I
- II*
- II

Rampion Extension Development

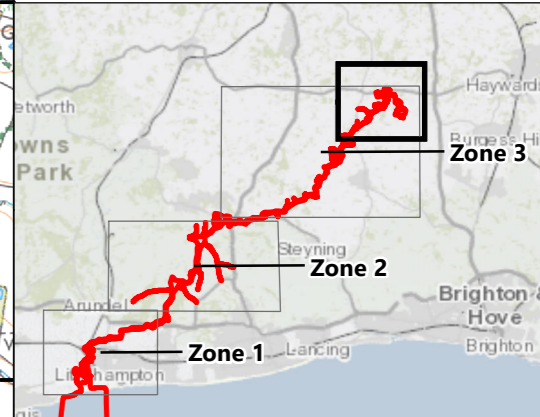
Rampion 2 Offshore Wind Farm

Figure 25.6h Designated heritage assets with onshore cable corridor and ZTV

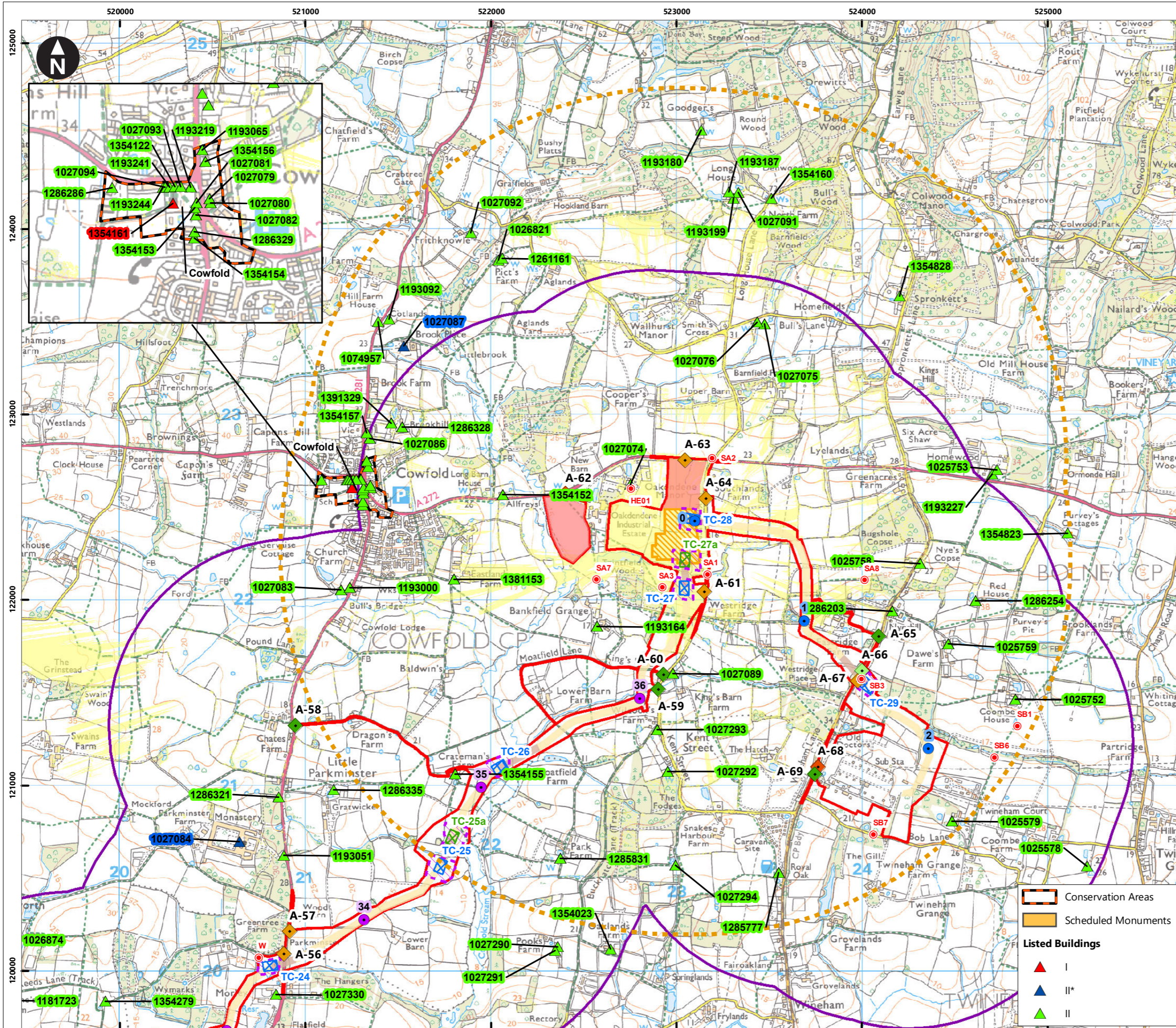
Environmental Statement

System Identifier: 42285-WSP-ES-ON-FG-OH-2474 Version: 1.0

Company: WSP Drawn By: SHEPS Chk/Prvrd: ASTBD Drawn Date: 28/07/2023 Status: Final



0 0.1 0.2 0.4 0.6 0.8
 Kilometres
 1:20,000
 British National Grid Transverse Mercator



Service Layer Credits: Contains OS data © Crown Copyright and database right 2023
 © Crown copyright and database rights 2023 Ordnance Survey 0100031673

Key

- Proposed DCO Order Limits
- 1km study area
- Oakdene substation site
- 2km Oakdene substation buffer
- Trenchless Crossing (TC) compounds
- Trenchless Crossing (TC) compound alternatives
- Trenchless Crossing (TC) limits of deviation
- Temporary construction compound

Onshore cable route KM points

- Onshore Substation connection
- Onshore cable route

Access from public highway

- Construction
- Construction & operational
- Light construction
- Light construction & operational
- Operational
- Viewpoints
- Area where onshore substation is theoretically visible

Conservation Areas

- Scheduled Monuments

Listed Buildings

- I
- II*
- II

Inset Map: Shows the location of the study area within the context of the surrounding region, highlighting Zone 1, Zone 2, and Zone 3.

Scale: 0 0.1 0.2 0.4 0.6 0.8 Kilometres
 1:20,000
 British National Grid Transverse Mercator

Rampion Extension Development

Rampion 2 WIND FARM

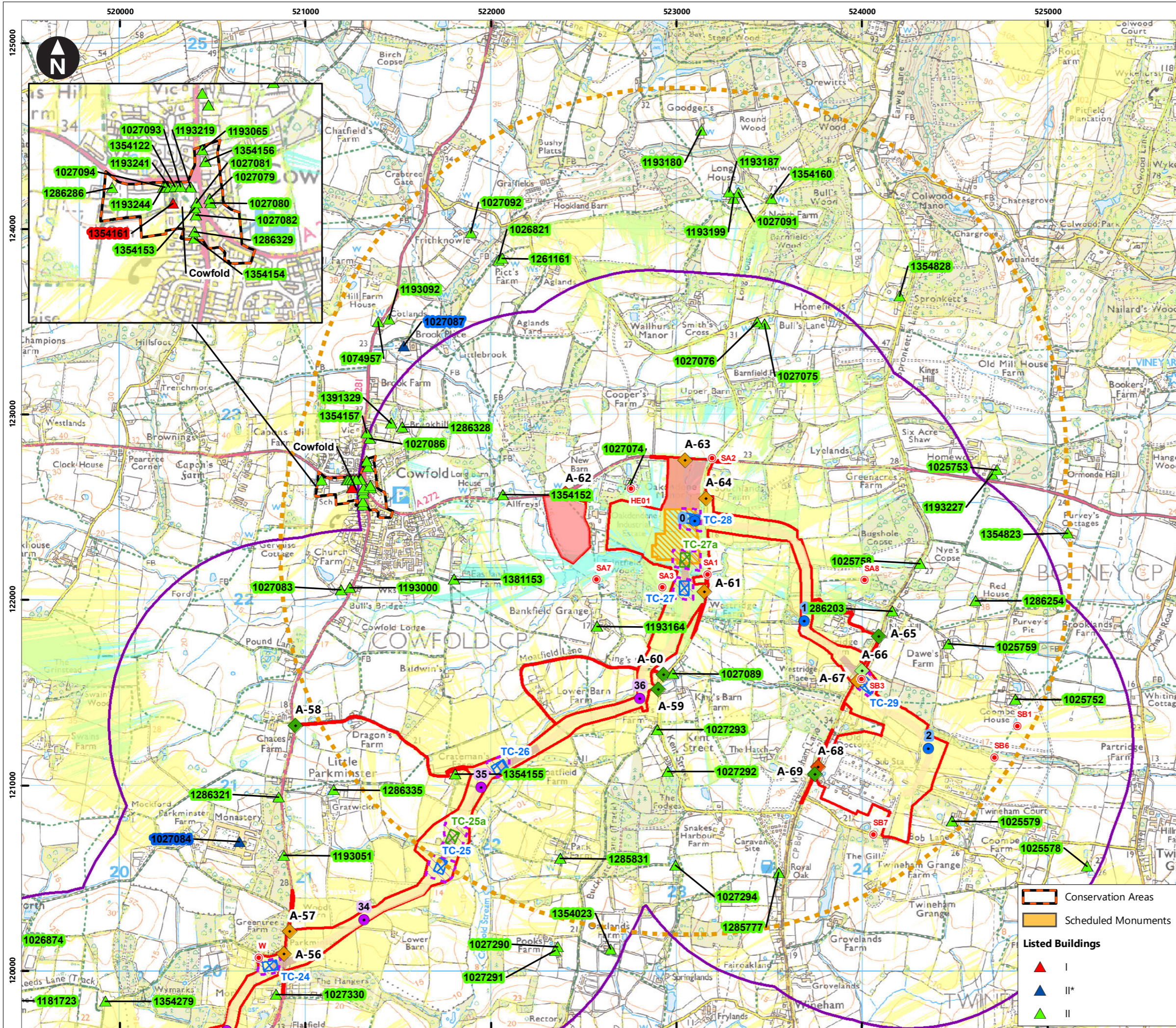
Rampion 2 Offshore Wind Farm

Figure 25.7a Designated heritage assets with onshore substation and ZTV

Environmental Statement

System Identifier: 42285-WSP-ES-ON-FG-OH-3542 Version: 1.0

Company: WSP Drawn By: SHEPS Chk/Prvrd: ASTBD Drawn Date: 31/07/2023 Status: Final



Service Layer Credits: Contains OS data © Crown Copyright and database right 2023
 © Crown copyright and database rights 2023 Ordnance Survey 0100031673

Key

- Proposed DCO Order Limits
- 1km study area
- Oakdene substation site
- 2km Oakdene substation buffer
- Trenchless Crossing (TC) compounds
- Trenchless Crossing (TC) compound alternatives
- Trenchless Crossing (TC) limits of deviation
- Temporary construction compound

Onshore cable route KM points

- Onshore Substation connection
- Onshore cable route

Access from public highway

- Construction
- Construction & operational
- Light construction
- Light construction & operational
- Operational
- Viewpoints

Visibility

- Area onshore cable corridor construction works is theoretically visible
- Area where onshore substation is theoretically visible
- Area where both onshore substation and onshore cable corridor construction works is theoretically visible

Conservation Areas

Scheduled Monuments

Listed Buildings

- I
- II*
- II

Zone 1
Zone 2
Zone 3

Kilometres
 0 0.1 0.2 0.4 0.6 0.8
 1:20,000
 British National Grid Transverse Mercator

Rampion Extension Development

Rampion 2 WIND FARM

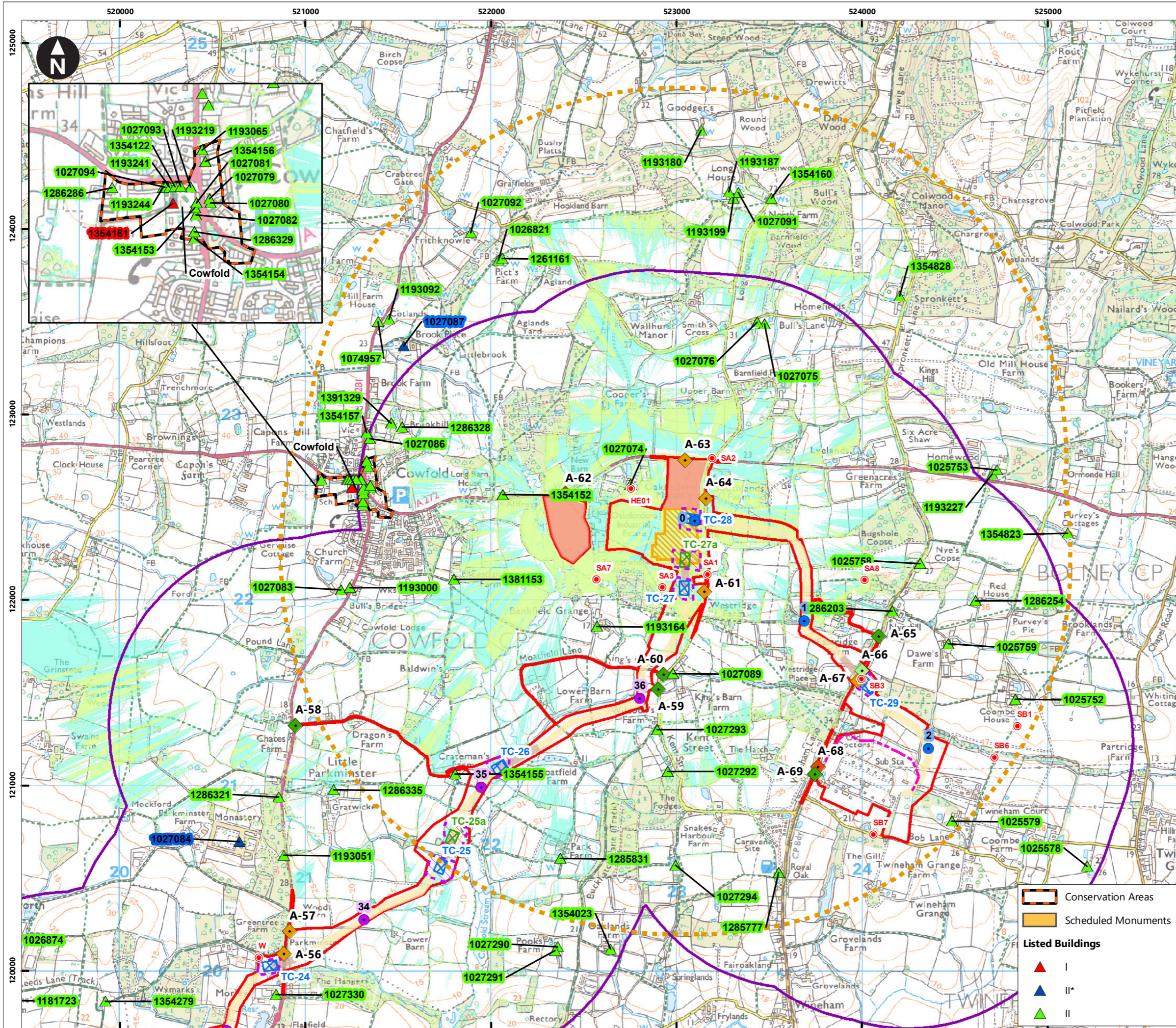
Rampion 2 Offshore Wind Farm

Figure 25.7b Designated heritage assets with onshore substation and ZTV

Environmental Statement

System Identifier: 42285-WSP-ES-ON-FG-OH-3542
 Version: 1.0

Company: WSP
 Drawn By: SHEPS
 Chk/Prvrd: ASTBD
 Drawn Date: 31/07/2023
 Status: Final



Service Layer Credits: Contains OS data © Crown Copyright and database right 2023

© Crown copyright and database rights 2023 Ordnance Survey 0100031673

Key

- Proposed DCO Order Limits
- 1km study area
- Oakdene substation site
- 2km Oakdene substation buffer
- Trenchless Crossing (TC) compounds
- Trenchless Crossing (TC) compound alternatives
- Trenchless Crossing (TC) limits of deviation
- Temporary construction compound

Onshore cable route KM points

- Onshore Substation connection
- Onshore cable route

Access from public highway

- Construction
- Construction & operational
- Light construction
- Light construction & operational
- Operational
- Viewpoints

Area where temporary construction compound modelled at 20m is theoretically visible. Visibility was modelled at 20m maximum height to account for concrete batching plant height

Areas where temporary construction compound modelled at 7m and 20m is theoretically visible. Visibility was modelled at 7m maximum height to account for the maximum construction vehicle height

Conservation Areas

Scheduled Monuments

Listed Buildings

- I
- II*
- II

Zone 1

Zone 2

Zone 3

Kilometres
0 0.1 0.2 0.4 0.6 0.8

1:20,000
British National Grid Transverse Mercator

Rampion Extension Development

Rampion 2 WIND FARM

Rampion 2 Offshore Wind Farm

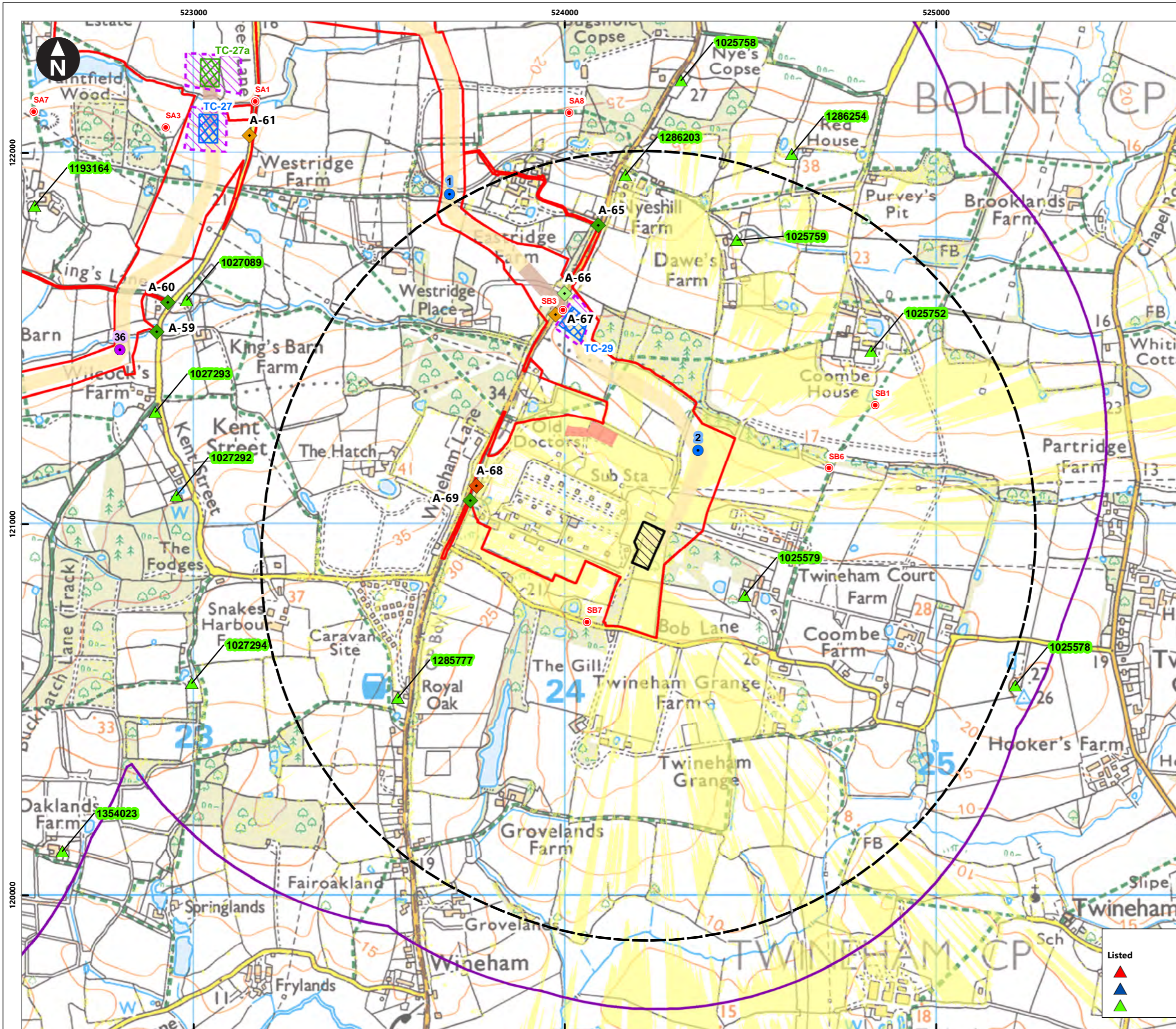
Figure 25.7c Designated heritage assets with onshore substation and ZTV

Environmental Statement

System Identifier: 42285-WSP-ES-ON-FG-OH-3542

Version: 1.0

Company: WSP | Drawn By: SHEPS | Chk/Prvrd: ASTBD | Drawn Date: 31/07/2023 | Status: Final



Service Layer Credits: Contains OS data © Crown Copyright and database right 2023
 © Crown copyright and database rights 2023 Ordnance Survey 0100031673

Key

- Proposed DCO Order Limits
- 1km study area
- Bolney Substation extension (AIS)
- 1km Bolney extension works buffer
- Trenchless Crossing (TC) compounds
- Trenchless Crossing (TC) compound alternatives
- Trenchless Crossing (TC) limits of deviation
- Temporary construction compound

Proposed onshore cable construction corridor

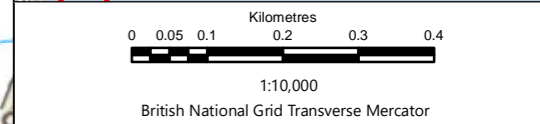
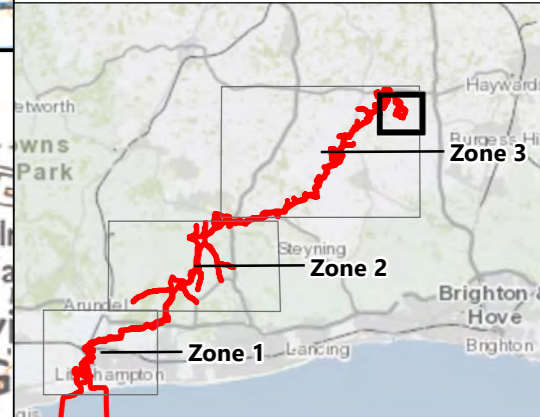
- Indicative trenchless section
- Indicative open cut section

Onshore cable route KM points

- Onshore Substation connection
- Onshore cable route

Access from public highway

- ◆ Construction
- ◇ Construction & operational
- ◆ Light construction & operational
- ◇ Operational
- Viewpoints
- Area where Bolney substation extension (AIS) is theoretically visible



Rampion Extension Development

Rampion 2 Offshore Wind Farm

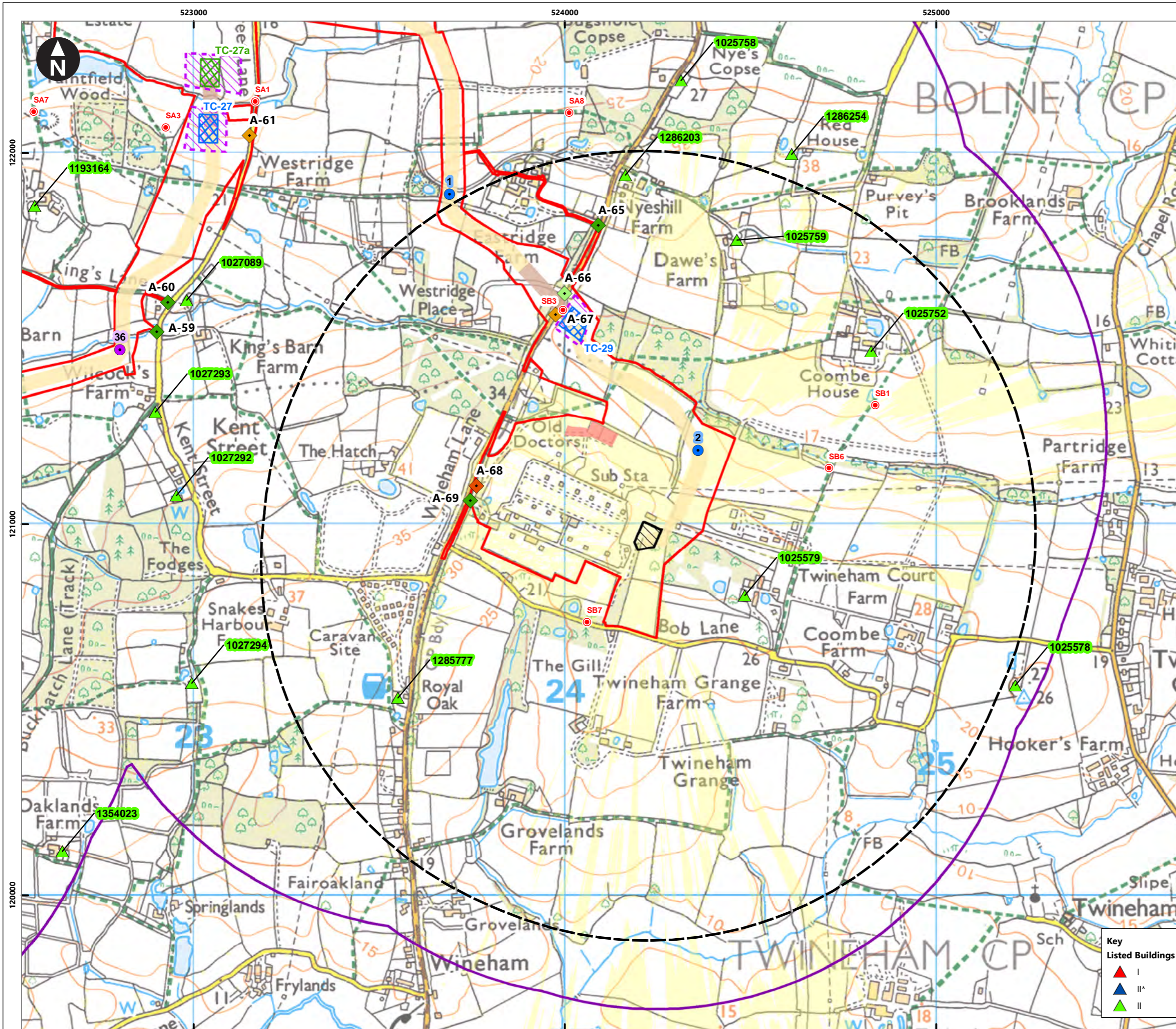
Figure 25.8a Designated heritage assets with Bolney substation extension and ZTV

Environmental Statement

Listed

- ▲
- ▲
- ▲

System Identifier: 42285-WSP-ES-ON-FG-OH-7567		Version: 1.0
Company: WSP	Drawn By: SHEPS	Chk/Aprvd: ASTBD
Drawn Date: 04/08/2023	Status: Final	



Service Layer Credits: Contains OS data © Crown Copyright and database right 2023
 © Crown copyright and database rights 2023 Ordnance Survey 0100031673

Key

- Proposed DCO Order Limits
- 1km study area
- Bolney Substation extension (GIS)
- 1km Bolney extension works buffer
- Trenchless Crossing (TC) compounds
- Trenchless Crossing (TC) compound alternatives
- Trenchless Crossing (TC) limits of deviation
- Temporary construction compound

Proposed onshore cable construction corridor

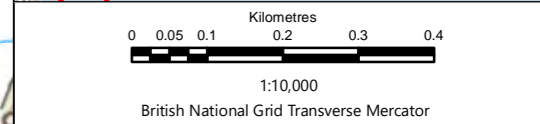
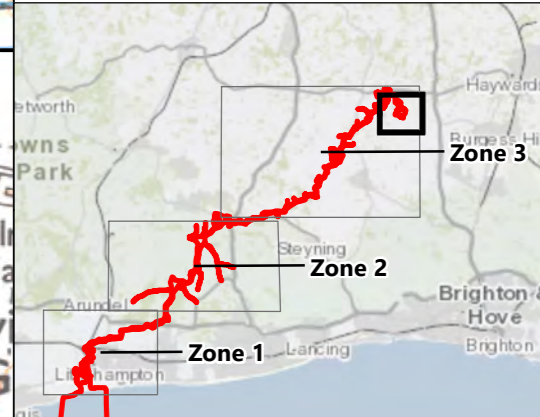
- Indicative trenchless section
- Indicative open cut section

Onshore cable route KM points

- Onshore Substation connection
- Onshore cable route

Access from public highway

- Construction
- Construction & operational
- Light construction & operational
- Operational
- Viewpoints
- Area where Bolney substation extension (GIS) is theoretically visible



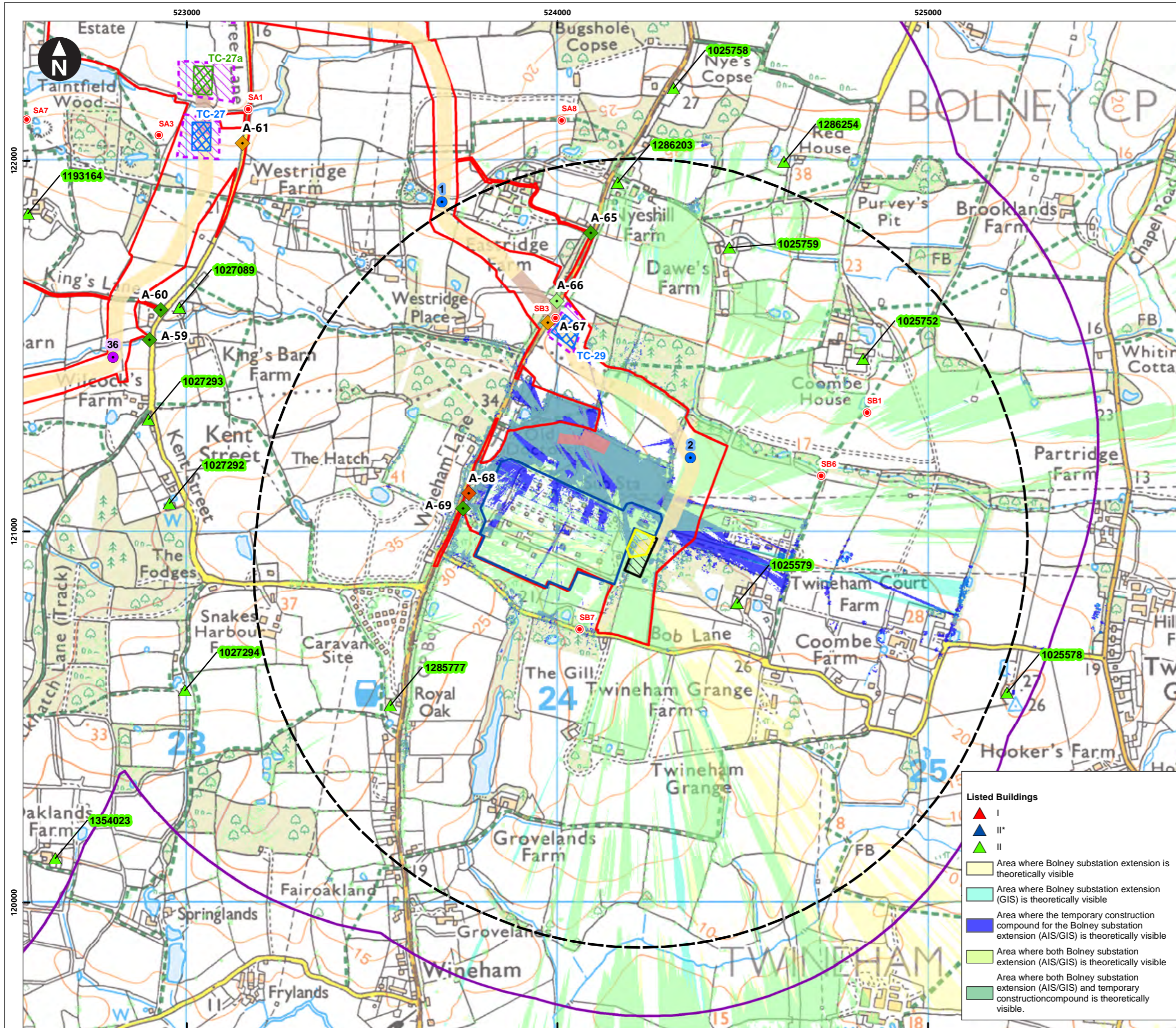
Rampion Extension Development

Rampion 2 Offshore Wind Farm
 Figure 25.8b Designated heritage assets with Bolney substation extension and ZTV
 Environmental Statement

Key Listed Buildings

- I
- II*
- II

System Identifier: 42285-WSP-ES-ON-FG-OH-7567		Version: 1.0
Company: WSP	Drawn By: SHEPS	Chk/Prvrd: ASTBD
Drawn Date: 04/08/2023	Status: Final	



Service Layer Credits: Contains OS data © Crown Copyright and database right 2023
 © Crown copyright and database rights 2023 Ordnance Survey 0100031673

Key

- Proposed DCO Order Limits
- 1km study area
- Bolney Substation extension (AIS)
- Bolney Substation extension (GIS)
- 1km Bolney extension works buffer
- Existing National Grid Substation
- Trenchless Crossing (TC) compounds
- Trenchless Crossing (TC) compound alternatives
- Trenchless Crossing (TC) limits of deviation
- Temporary construction compound

Proposed onshore cable construction corridor

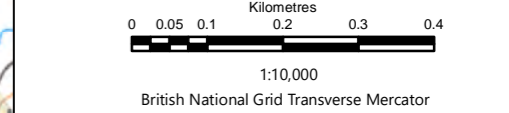
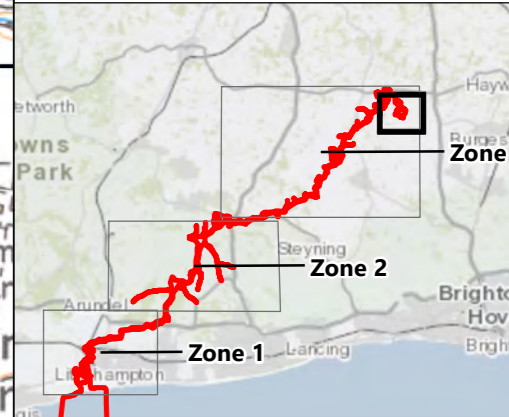
- Indicative trenchless section
- Indicative open cut section

Onshore cable route KM points

- Onshore Substation connection
- Onshore cable route

Access from public highway

- ◆ Construction
- ◆ Construction & operational
- ◆ Light construction & operational
- ◆ Operational
- Viewpoints



Listed Buildings

- ▲ I
- ▲ II*
- ▲ II

- Area where Bolney substation extension is theoretically visible
- Area where Bolney substation extension (GIS) is theoretically visible
- Area where the temporary construction compound for the Bolney substation extension (AIS/GIS) is theoretically visible
- Area where both Bolney substation extension (AIS/GIS) is theoretically visible
- Area where both Bolney substation extension (AIS/GIS) and temporary construction compound is theoretically visible.

Rampion Extension Development

Rampion 2 Offshore Wind Farm
 Figure 25.8c Designated heritage assets with Bolney substation extension and ZTV
 Environmental Statement

System Identifier: 42285-WSP-ES-ON-FG-OH-7567
 Version: 1.0

Company: WSP	Drawn By: SHEPS	Chk/Prvd: ASTBD	Drawn Date: 04/08/2023	Status: Final
--------------	-----------------	-----------------	------------------------	---------------